



# Breath of Life: Heart Disease Link to Developmental Hypoxia

Dino A. Giussani , PhD, ScD, FRCOG

**ABSTRACT:** Heart disease remains one of the greatest killers. In addition to genetics and traditional lifestyle risk factors, we now understand that adverse conditions during pregnancy can also increase susceptibility to cardiovascular disease in the offspring. Therefore, the mechanisms by which this occurs and possible preventative therapies are of significant contemporary interest to the cardiovascular community. A common suboptimal pregnancy condition is a sustained reduction in fetal oxygenation. Chronic fetal hypoxia results from any pregnancy with increased placental vascular resistance, such as in preeclampsia, placental infection, or maternal obesity. Chronic fetal hypoxia may also arise during pregnancy at high altitude or because of maternal respiratory disease. This article reviews the short- and long-term effects of hypoxia on the fetal cardiovascular system, and the importance of chronic fetal hypoxia in triggering a developmental origin of future heart disease in the adult progeny. The work summarizes evidence derived from human studies as well as from rodent, avian, and ovine models. There is a focus on the discovery of the molecular link between prenatal hypoxia, oxidative stress, and increased cardiovascular risk in adult offspring. Discussion of mitochondria-targeted antioxidant therapy offers potential targets for clinical intervention in human pregnancy complicated by chronic fetal hypoxia.

**Key Words:** fetus ■ hypoxia ■ mitochondria ■ oxidative stress

In the United Kingdom, 1 in 4 people die of cardiovascular disease, averaging 460 deaths each day or 1 every 3 minutes. This costs the United Kingdom more than £30 billion per year in patient care and lost workforce because of heart disease.<sup>1</sup> Therefore, there is no question that cardiovascular disease is an important and expensive problem, imposing a significant burden on every nation's health and wealth. We accept that our genetic make-up interacts with traditional lifestyle risk factors, such as smoking, obesity, or a sedentary life, in triggering a risk of cardiovascular disease. In addition, it has become established that the gene–environment interaction before birth may be as—if not more—important in setting a future risk of heart disease through a process known as developmental programming.<sup>2</sup> This concept supports that the environment experienced around conception or during the fetal and neonatal periods permanently alters the anatomy and physiology of key organs and systems in offspring, thereby leading to an increased risk of cardiovascular disease later in life.<sup>2</sup> Developmental program-

ming is an extension of the Barker hypothesis, proposed in the late 1980s by British epidemiologist David Barker, who stated that intrauterine growth retardation, low birth weight, and premature birth, acting as surrogate markers of adverse intrauterine conditions, have a causal relationship with the origins of hypertension, coronary heart disease, and non–insulin-dependent diabetes, in middle age.<sup>3</sup> The concept of developmental programming makes good sense because our physiology (ie, what makes us function) is much more malleable and plastic during early life. Therefore, periods during development relative to those in adulthood can be exquisitely sensitive to environmental conditions, yielding later-life traits shaped by early-life conditions through what has been described as developmental plasticity.<sup>4</sup> One excellent example is that in some reptilian species, ambient temperature during a critical period of embryonic development can determine whether an egg develops as male or female.<sup>5</sup> Thus, the magnitude of the effect of the environment on us across the life-course clearly varies, and it can be represented

Correspondence to: Professor D.A. Giussani, PhD, Department of Physiology, Development, and Neuroscience, University of Cambridge, Downing Street, Cambridge CB2 3EG, United Kingdom. Email dag26@cam.ac.uk

For Sources of Funding and Disclosures, see page 1441.

© 2021 The Authors. *Circulation* is published on behalf of the American Heart Association, Inc., by Wolters Kluwer Health, Inc. This is an open access article under the terms of the [Creative Commons Attribution](https://creativecommons.org/licenses/by/4.0/) License, which permits use, distribution, and reproduction in any medium, provided that the original work is properly cited.

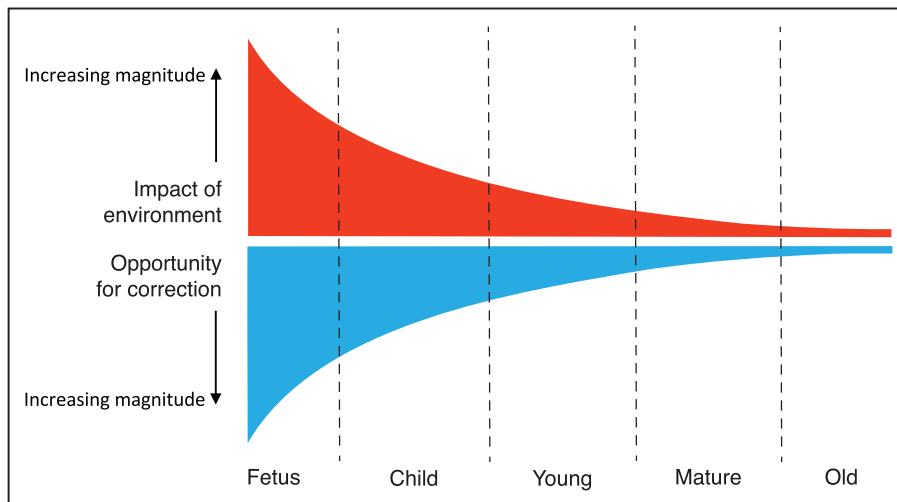
*Circulation* is available at [www.ahajournals.org/journal/circ](http://www.ahajournals.org/journal/circ)

by a reverse exponential relationship having its maximal expression during embryonic or fetal life and diminishing progressively as we grow older (Figure 1). Equally important is that the opportunity for correction follows a similar trajectory: it is greatest in early life and diminishes progressively as we grow older (Figure 1). Therefore, in medicine and in public health today, there is a growing change in perception as to how to best tackle cardiovascular disease. Focus is moving away from treatment, where we can do comparatively little, toward prevention, where we can comparatively do a lot (Figure 1). It is clear that the earlier in development, the greater the window for intervention. Therefore, there is great interest in halting the progression of disease at its very onset; that is, if possible, to bring “preventative medicine back into the womb,” or to think of even earlier interventions that could take place during the preconceptional period.

In humans, the best available evidence to support the concept of developmental programming comes from studies in women who were obese during a first pregnancy, lost weight through bariatric surgery, and were leaner during a second pregnancy.<sup>6</sup> These studies show that siblings born before the bariatric surgery have signs of an increased cardiovascular risk (obesity, insulin resistance, and raised arterial blood pressure), compared with those born after surgery.<sup>6</sup> Therefore, such studies in humans highlight that a different environment in the same womb can program a differential risk of cardiovascular disease in offspring of the same family. This provides compelling evidence in humans that the environment experienced during critical, sensitive periods of early development directly influences long-term cardio-

vascular health. Therefore, in this field of science, there is interest in how adverse conditions during pregnancy may program an increased cardiovascular risk in the adult offspring and, if so, through which mechanisms, so that we can design interventional strategies.

In recent years, many excellent reviews have discussed the effect of pregnancy complicated by changes in maternal nutrition, exposure to stress hormones, environmental pollution, or maternal substance abuse on programmed cardiovascular disease in the offspring at adulthood.<sup>7–10</sup> By contrast, the contribution of pregnancy complicated by chronic hypoxia has been comparatively ignored. This is surprising, given that chronic fetal hypoxia is one of the most common outcomes of complicated pregnancy in humans.<sup>11</sup> In essence, any condition that increases placental vascular resistance will decrease oxygen delivery to the growing baby (eg, during preeclampsia, placental insufficiency, or chorioamnionitis).<sup>11,12</sup> It is important to note that inflammatory conditions during pregnancy are quite topical today; gestational diabetes and maternal obesity are just as concerning, since they also promote an increase in placental vascular resistance, thereby leading to chronic reductions in fetal oxygenation.<sup>11–13</sup> Therefore, chronic fetal hypoxia provides a common path for several complications in pregnancy, and there is accumulating evidence derived from human studies as well as animal models to support that it can trigger an early origin of cardiovascular dysfunction and program susceptibility to cardiovascular disease in later life. To understand how fetal hypoxia may program an increased cardiovascular risk, we must first consider the short- and long-term effects of hypoxia on the fetal cardiovascular system.



**Figure 1. Biological programming and age.**

Laws of nature predict that the younger we are, the greater the impact the environment has on us. This environmental impact has its maximum expression during embryonic or fetal life, and it diminishes progressively as we grow older. Equally important is that the opportunity for correction follows a similar trajectory, being greatest in early life and diminishing progressively as we grow older. Therefore, in medicine and public health today, there is a growing change in practice away from treatment, when we can do comparatively little, toward prevention, when we can do comparatively a lot. Clearly, there is no better form of preventative medicine than bringing this concept right back along the developmental trajectory, when the window of opportunity for correction is greatest, and try to halt the development of disease at its very onset, by bringing “preventative medicine back into the womb.”

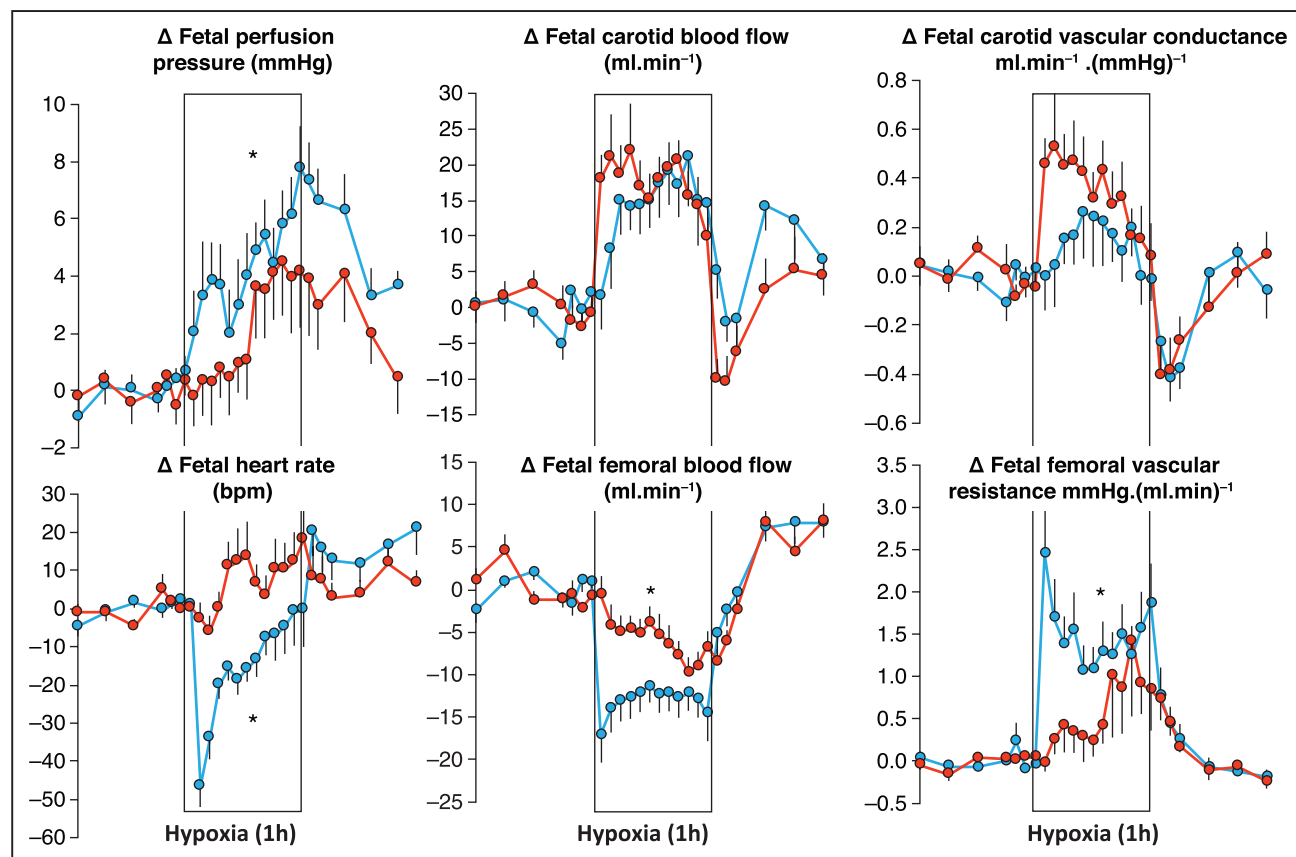
## HYPOXIA: SHORT-TERM EFFECTS ON THE FETUS

### From Starling to Bohr

In contrast with life after birth, during which periods of hypoxia can be compensated for by an increase in oxygenation secondary to an increase in lung ventilation, the fetus adopts a different strategy to withstand episodes of reduced oxygenation. As the fetus obtains oxygen from the mother through the placenta; upon reduction in oxygenation, the fetus can decrease oxygen consumption, increase oxygen extraction, and/or make best use of the available oxygen supply.<sup>14–16</sup> The fetal cardiovascular defense responses to hypoxia exemplify all of these strategies (Figure 2). In response to acute hypoxia, there is a reduction in fetal heart rate, which is useful for several reasons. Fetal bradycardia reduces myocardial oxygen consumption, and prolongs the beat-to-beat interval, thereby lengthening end-diastolic filling time and, hence,

increasing end-diastolic volume.<sup>11,14</sup> The latter increases the stretch on the fetal myocardial cells, increasing their tension through greater interaction between the thick and thin myofilaments. As a result, the force of contraction in the fetal myocardium is increased via the Frank–Starling mechanism, which helps maintain cardiac output, despite bradycardia.<sup>11,14</sup> The fall in heart rate and prolongation of the beat-to-beat interval also reduces the velocity of blood flow through the microvasculature, allowing longer time for oxygen extraction by tissues that are becoming hypoxic.<sup>11,14</sup> In clinical practice, the fetal heart rate response to acute hypoxia is indicated by fetal heart rate decelerations and it is a response exploited every day in fetal heart rate monitoring when assessing fetal well-being during the uterine contractions of labor, which can restrict uteroplacental blood flow and reduce fetal oxygenation.<sup>15</sup>

Hypoxia also affects the fetal circulation. During acute fetal hypoxia, there is a redistribution of the fetal car-



**Figure 2. Cardiovascular defense to acute hypoxia.**

Values are mean $\pm$ SEM for the change from baseline in perfusion pressure (arteriovenous difference), heart rate, carotid and femoral arterial blood flow, carotid vascular conductance (flow/pressure) and femoral vascular resistance (pressure/flow) during a 1-h period of acute hypoxia (box) in 14 intact (blue circles) and 12 carotid chemoreceptor denervated (red circles) fetal sheep in late gestation. The Darcy law of flow, which is the hydraulic equivalent of the Ohm law of electricity, was formulated in 1856 after his study of water flowing through gravel beds of the fountains of Dijon: flow in the steady state is linearly proportional to the pressure difference between 2 points and inversely proportional to the resistance across them. Vascular conductance and resistance can be calculated by applying the Darcy law to the circulation: blood flow is proportional to the arteriovenous pressure difference and inversely proportional to vascular resistance. Carotid chemoreceptor denervation attenuates the increase in fetal perfusion pressure, abolishes the fetal bradycardia, and delays the fall in femoral blood flow and the increase in femoral vascular resistance without affecting the increase in carotid blood flow or vascular conductance in response to acute hypoxia. \* $P < 0.05$ , intact vs carotid chemoreceptor denervated by ANOVA. Redrawn from Giussani et al<sup>16</sup> with permission. Copyright © 1993 The Physiological Society.

diac output, shunting blood flow away from the peripheral circulations toward the fetal brain, heart and adrenal glands.<sup>11,14</sup> This circulatory defense has been dubbed as “the fetal brain sparing response” and in animal models, such as in late-gestation fetal sheep, it is reflected by an increase in carotid blood flow and a fall in femoral arterial blood flow (Figure 2).<sup>16</sup> Applying Ohm's law to fluid dynamics, the French engineer Darcy stated that, in the steady state, flow is linearly proportional to the pressure difference between 2 points and inversely proportional to resistance across them.<sup>17</sup> Applying Darcy's Law to the circulation, this suggests that blood flow is proportional to the arteriovenous pressure difference and inversely proportional to vascular resistance. Therefore, whether the increase in carotid blood flow in the fetus during acute hypoxia is purely pressure-driven—or greater than can be accounted for by an increase in fetal arterial blood pressure—can be approximated by calculating carotid vascular resistance (fetal arterial pressure/fetal carotid blood flow), or better still carotid vascular conductance, which is the inverse of resistance (fetal carotid blood flow/fetal arterial blood pressure). This calculation reveals a significant increase in carotid vascular conductance in the fetus during acute hypoxia (Figure 2),<sup>16</sup> meaning that improved cerebral blood flow in the fetus during acute hypoxia is not a passive process purely driven by an increase in fetal arterial blood pressure. Rather, there is active vasodilatation in the fetal cerebral microvasculature during acute hypoxia, which is known to result from local increases in many dilator agents, including adenosine, nitric oxide, and prostanoids.<sup>18</sup> Similarly, the fall in fetal femoral arterial blood flow during acute hypoxia is secondary to active peripheral vasoconstriction. Jean Léonard Marie Poiseuille stated that halving the radius of a tube will increase its resistance by 16 times.<sup>19</sup> Hence, the femoral vasoconstriction in the fetus during acute hypoxia will decrease the luminal radius of the femoral artery, triggering a marked increase in femoral vascular resistance (fetal arterial blood pressure/fetal femoral arterial blood flow).<sup>16</sup> Consequently, during an acute episode of oxygen deprivation, the fetal cardiac output follows the path of least resistance, and blood flow is prioritized away from less essential vascular beds to maintain oxygen delivery to more hypoxia-sensitive regions, such as the developing brain, heart, and adrenal glands.<sup>11</sup> In obstetric practice, this hemodynamic redistribution in the fetus is indicated by changes in Doppler blood flow velocimetry, whereby an increase in regional vascular resistance is picked up by an increase in the pulsatility index of the waveform of the vascular bed in question. Hence, clinically, a fall in the Doppler pulsatility index of the fetal middle cerebral artery relative to the umbilical artery flow velocity waveform is a sign of fetal hypoxia and fetal brain sparing.<sup>20</sup>

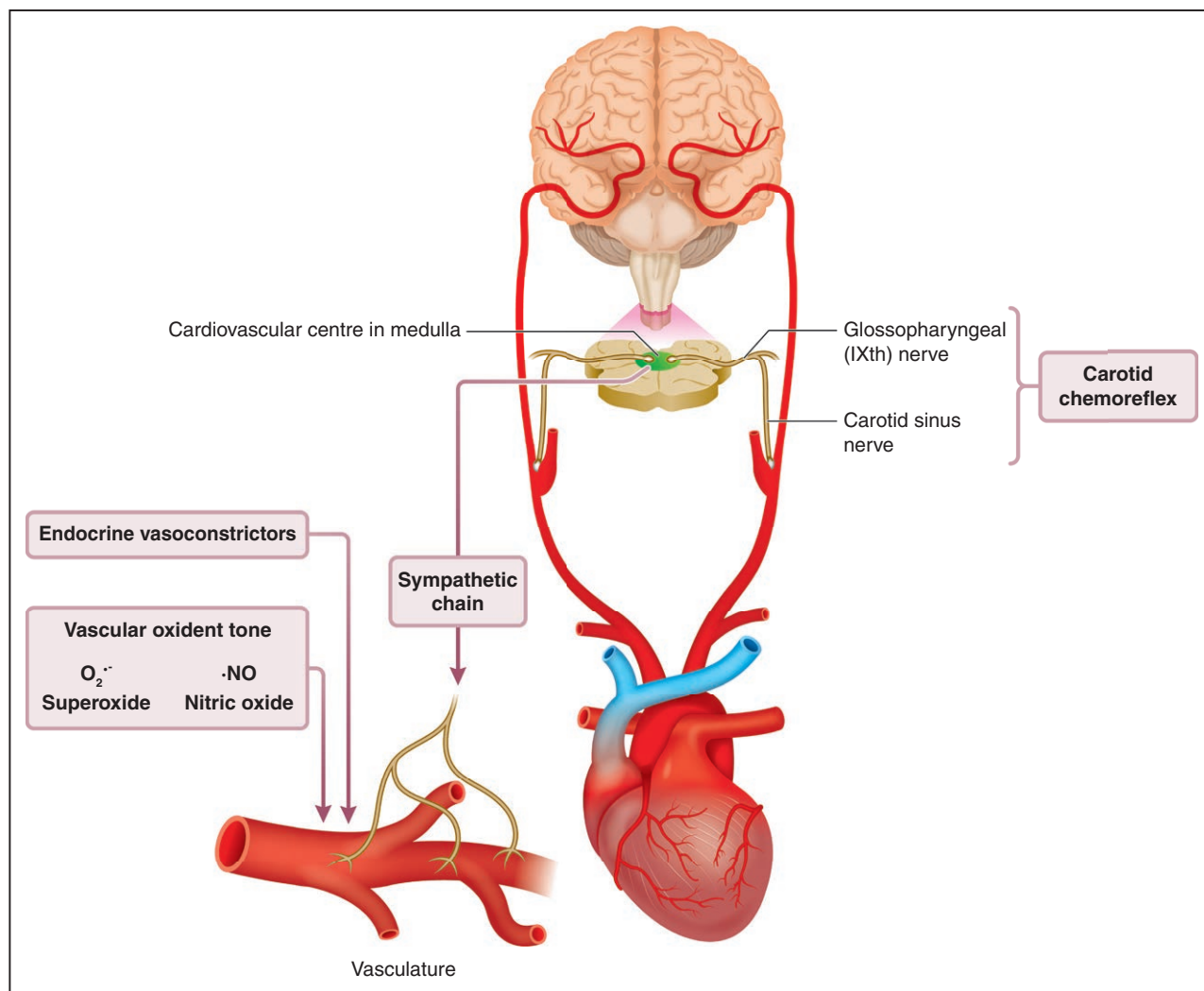
Oxygen delivery is coupled to oxygen consumption. Therefore, limiting blood flow to less essential vascular

beds, such as the fetal gut and fetal hind limbs, during the fetal brain-sparing response also contributes to an overall fall in fetal oxygen consumption during acute hypoxia.<sup>21</sup> Decreased oxygen delivery to the fetal hind-limb musculature leads to anaerobic metabolism, increasing lactate output and acidifying the fetal blood.<sup>21</sup> This not only facilitates the unloading of oxygen from hemoglobin to the fetal tissues through a Bohr effect; the fall in fetal pH also sensitizes the fetal cardiovascular defense to acute hypoxia, enhancing the magnitude of the fetal brain-sparing circulatory responses.<sup>22,23</sup>

### Mechanisms Underlying the Fetal Cardiovascular Defense to Acute Hypoxia

The physiology underlying the fetal cardiovascular defense to short episodes of hypoxia is well delineated.<sup>11</sup> We know that the cardiovascular responses are triggered exclusively by a carotid chemoreflex.<sup>16</sup> Bilateral section of the carotid sinus nerves abolishes the fetal bradycardia and delays the increase in femoral vascular resistance without affecting the increase in carotid vascular conductance in response to acute hypoxia (Figure 2).<sup>16</sup> After the increase in carotid chemoreceptor discharge to the fetal brain stem, there is activation of the autonomic nervous system increasing vagal outflow to the heart coupled with sympathetic outflow withdrawal, which reduces heart rate (Figure 3).<sup>16</sup> There is also increased sympathetic outflow to the peripheral circulation, which promotes vasoconstriction via release of noradrenaline and neuropeptide Y acting on  $\alpha$ -adrenergic and Y1 receptors, respectively.<sup>16,24,25</sup> Once triggered, the peripheral constriction is maintained by the release of hormones into the fetal circulation, such as an increase in catecholamines and vasopressin.<sup>26,27</sup> Chemoreflex and endocrine responses to acute hypoxia in the fetus mature with advancing gestational age toward term, in parallel with the parturition surge in fetal plasma cortisol.<sup>27,28</sup> Therefore, antenatal glucocorticoid therapy in pregnancy threatened by preterm birth can be exploited to accelerate the maturation of the fetal cardiovascular defense to acute hypoxia, as well as the fetal lungs.<sup>28–32</sup>

In the past few years, research has revealed that the neuroendocrine vasoconstriction triggered by the carotid chemoreflex and maintained by constrictor hormones in the fetus is supplemented by a third component, which is the vascular oxidant tone. This redox influence acts locally at the level of the microcirculation and is promoted by an increase in the ratio of free radicals, such as the superoxide anion ( $O_2^{\cdot-}$ ) relative to nitric oxide (NO), both of which are increased in the fetus during periods of oxygen deprivation.<sup>33,34</sup> This vascular redox tone is operational in the late gestation fetus and it can be manipulated in favor of constriction or dilatation by altering the numerator or denominator of the  $O_2^{\cdot-}$ :NO fraction.<sup>34–37</sup> The magnitude of the peripheral vasoconstrictor



**Figure 3. Physiology underlying the fetal cardiovascular defense to acute hypoxia.**

Activation of a carotid chemoreflex by hypoxic blood triggers a fall in heart rate and vasoconstriction in the peripheral circulation in the fetus. The fall in heart rate is vagally mediated and the peripheral vasoconstriction is initiated by activation of the sympathetic nerves. Vasoconstrictor hormones, such as catecholamines and vasopressin are then released into the fetal circulation to maintain the neurally-triggered vasoconstriction. The neuroendocrine vasoconstriction is then supplemented by a vascular oxidant tone, which is promoted by an increase in the ratio of free radicals, such as the superoxide anion (O<sub>2</sub><sup>•-</sup>) relative to nitric oxide (NO), both of which are increased in the fetus during periods of oxygen deprivation. The magnitude of the peripheral vasoconstrictor response to acute hypoxia in the late-gestation fetus therefore depends on the partial contributions of chemoreflex, endocrine, and local vascular redox responses. Redrawn from Giussani<sup>11</sup> with permission. Copyright ©2016, The Physiological Society.

response to acute hypoxia, an important contributor to the fetal brain-sparing response in the late gestation fetus, therefore depends on the aggregate contributions of chemoreflex, endocrine, and local vascular redox responses (Figure 3).<sup>11</sup>

## HYPOXIA: LONG-TERM EFFECTS ON THE FETUS

### Maintained Redistribution of Blood Flow

It has now become clear that the fetal hemodynamic response to oxygen deprivation, redistributing cardiac output toward the fetal brain, heart, and adrenals, can persist

during pregnancy complicated by chronic fetal hypoxia.<sup>11,12,38–40</sup> Although protective, this compensatory circulatory response is insufficient to prevent adverse outcomes in infants born from hypoxic pregnancies. For example, ≈50% of cases can show signs of adverse neurological outcomes, ranging from overt brain lesions, such as leukomalacia and cerebral palsy, to a wide range of more subtle disturbances, such as changes to the morphology of the retinal optic nerve.<sup>41</sup> Even in milder cases, the maintained fetal redistribution of blood flow in response to chronic hypoxia may also trigger unwanted side-effects on fetal growth and cardiovascular development. Chronic hypoxia directly, and indirectly via elevations in fetal plasma catecholamine levels, will inhibit fetal insulin

secretion.<sup>42</sup> The increase in blood glucose availability will help its redistribution to the fetal brain, heart, and adrenal glands during chronic hypoxia, promoting a benefit.<sup>40</sup> However, the trade-off will be a reduction in glucose uptake by other fetal tissues, which will decelerate fetal growth rate. Likewise, IGF-1 (insulin-like growth factor 1) is suppressed in virtually all models of fetal growth restriction.<sup>7</sup> Further, fetal glycemia will reduce the maternal-to-fetal glucose concentration gradient, worsening substrate transfer for fetal growth.<sup>43</sup> Recent evidence suggests that the growth-restricted human fetus in pregnancy is complicated by chronic hypoxia triggers compensatory mechanisms to reduce its metabolic rate, matching the proportion of substrate consumption relative to oxygen delivery as a survival strategy.<sup>44</sup> Despite beneficial adaptations by the placenta, designed to lessen the negative effect of chronic hypoxia on fetal growth,<sup>45</sup> these metabolic adaptations in the chronically hypoxic fetus coupled with the sustained redistribution of blood flow from the periphery results in asymmetrical fetal growth restriction. This yields offspring whom are thin for their length and/or have an appropriate head size relative to their comparatively shorter body length. In neonatology, this is indicated by a fall in birth weight with a reduced ponderal index or with an increase in the bi-parietal diameter relative to the body length ratio or with an increase in the head circumference relative to abdominal girth ratio of the new-born baby, all of which are clinical signs that the pregnancy has been complicated by chronic fetal hypoxia.<sup>11</sup>

Evidence in humans suggesting that oxygen tension is an important dictator of fetal growth is provided by the well-known effects of the hypobaric hypoxia of pregnancy at high altitude, which yields babies of low birth weight compared with those born at sea level, with clinical signs of asymmetry (Figure 4).<sup>46,47</sup> Studies of obstetric records in Bolivia from healthy term human pregnancies showed that babies born in the high-altitude city of La Paz (≈3600 meters above sea level) were significantly lighter compared with those born in the Bolivian sea-level city of Santa Cruz, independent of effects imposed by socioeconomic status.<sup>46,47</sup> It is interesting that babies born in La Paz from mothers of Andean ancestry, compared with those of European ancestry, were less growth restricted, despite the former showing greater indices of poverty, including maternal malnutrition.<sup>46,47</sup> These discoveries reveal a protective trait against the effects of high-altitude hypoxia on fetal growth has developed through generations of residence at high altitude and it is strong enough to overwhelm any potential detrimental effects of even maternal undernutrition on fetal growth.<sup>48</sup>

Compared with asymmetrical fetal growth restriction, the lesser well-described adverse consequence of sustained fetal peripheral vasoconstriction is that it may lead to maintained increases in fetal cardiac afterload, ie, the force against which the fetal heart pumps. Persistent increases in fetal arterial blood pressure can remodel the

cardiovascular system during sensitive periods of development and cause damage to blood vessels, leading to endothelial dysfunction and increased clotting, both of which are associated with an early origin of atherosclerosis.<sup>49</sup> Endothelial dysfunction and cardiac and aortic wall hypertrophy are the harbinger of cardiovascular disease, ideally placed to increase the risk of future cardiovascular susceptibility to dysfunction, even before birth.<sup>49</sup>

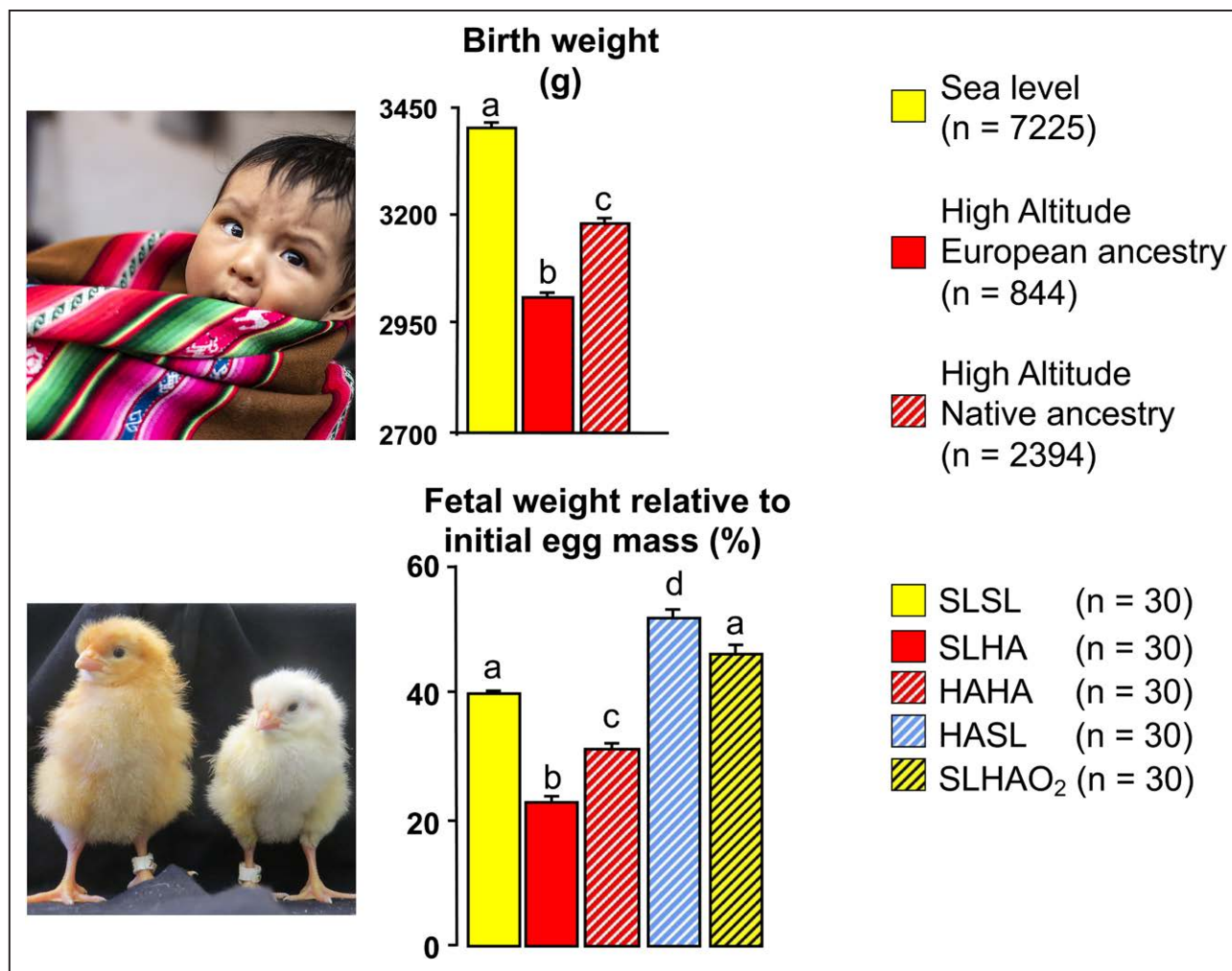
## Programmed Heart Disease and Interventions

Given the significant effects of chronic fetal hypoxia in altering the physiology and anatomy of the developing cardiovascular system, attention has shifted to determine long-term consequences across the life course. Research has focused on the effects of hypoxic pregnancy on the cardiovascular health of the offspring at adulthood, aiming to isolate underlying mechanisms and thereby identify plausible interventions. The following sections summarized some of this research effort, focusing on human studies, and investigations in rodent, avian, and ovine species.

### Insight From Human Studies

Evidence from human pregnancy is consistent with chronic fetal hypoxia affecting progeny through the life course. In humans, chronic fetal hypoxia triggers not only fetal growth restriction, but also a fetal origin of cardiovascular dysfunction, and programs an increased risk of heart disease in adult offspring. In the late-gestation human fetus, persistent increases in fetal cardiac afterload can remodel the fetal cardiovascular system, promoting thickening of the walls of the heart and major blood vessels.<sup>50,51</sup> Other reported abnormalities in the growth-restricted human fetus include a decrease in cardiomyocyte volume<sup>52</sup> and impaired cardiac ejection force and diastolic filling.<sup>53</sup> By early childhood, offspring born growth-restricted show atheromatous alterations in the abdominal aorta,<sup>54</sup> with persistent thickening of the aortic wall even when adjusted for their smaller body size<sup>55</sup> and increased risk of systemic hypertension.<sup>55</sup> Other studies have revealed a significant inverse relationship between low birth weight and endothelial dysfunction in 9- to 11-year-old children.<sup>56</sup> Longer follow-up studies of men and women who were born growth-restricted similarly show that low birth weight is associated with endothelial dysfunction and systemic hypertension by young adulthood.<sup>57,58</sup>

In the setting of human pregnancy affected by fetal growth restriction, there have been some translational interventional studies, aiming to ameliorate deleterious effects on the mother and the offspring. Interventional clinical studies conducted during pregnancy have focused on the effects of maternal oxygen therapy and maternal exercise. Some studies conducted after birth have investigated early-life intervention strategies in children from fetal growth-restricted pregnancies,



**Figure 4. The role of oxygen in the regulation of embryonic and fetal growth.**

Studies in Bolivia have revealed that babies born in the high-altitude city of La Paz (**top**, red bars;  $\approx 3600$  meters above sea level) have lower birth weight compared with babies born at the sea-level city of Santa Cruz (**top**, yellow bar). However, babies born from Andean mothers in La Paz (**top**, red hatched bar) show protection against this effect, being significantly heavier than babies born from European mothers in La Paz (**top**, red solid bar). These discoveries have been replicated and extended by studies in the chicken embryo. Incubation in La Paz of fertilized eggs laid by sea-level hens (**bottom**, red solid bar) led to a significant reduction in embryo weight by the end of the incubation period when compared with incubation in Santa Cruz of fertilized eggs laid by sea-level hens (**bottom**, yellow solid bar). Incubation at high altitude in La Paz of fertilized eggs laid by highland hens which had lived in La Paz for generational times (**bottom**, red hatched bar) produced embryos that were heavier compared with incubation in La Paz of fertilized eggs laid by sea-level hens (**bottom**, red solid bar). This finding confirms the protection against the effects of high-altitude hypoxia on fetal growth by prolonged highland-residence ancestry discovered in humans. Incubation of fertilized eggs laid by high-altitude hens at sea level in Santa Cruz (**bottom**, blue hatched bar) prevented the expected reduction in embryo weight. In fact, this group of embryos not only recovered their growth potential, but grew heavier when compared with embryos from eggs laid in Santa Cruz by sea-level hens (**bottom**, yellow solid bar). This is despite high-altitude eggs being substantially smaller than sea-level eggs. Last, incubation of fertilized eggs laid by sea-level hens at high altitude with oxygen supplementation at rates to equate to sea-level  $P_{aO_2}$  (**bottom**, yellow hatched bar) prevented the high altitude-induced reduction in embryo weight, confirming an isolated effect mediated by hypoxia. Values are mean  $\pm$  SEM. *n* numbers shown in brackets. Significant letters are significantly ( $P < 0.05$ ) different (ANOVA plus Tukey test). HAHA indicates high-altitude hens at high altitude; HASL, high-altitude hens at sea level; SLHA, sea-level hens at high altitude; SLHAO<sub>2</sub>, sea-level hens at high altitude with oxygen supplementation at rates to equate sea-level  $P_{aO_2}$ ; and SLSL, sea-level hens at sea level. Data from Giussani et al<sup>46,65</sup> with permission (Copyright ©2001, Springer Nature; Copyright ©2007, The Physiological Society) and Soria et al<sup>47</sup> (Copyright ©2013, Springer Nature). Photos reprinted from Itani et al<sup>97</sup> with permission.

aiming to curtail possible adverse long-term cardiometabolic outcomes.

Studies of maternal oxygen therapy in pregnancy with suspected chronic fetal hypoxia have been reported for more than 30 years, but clear evidence of any benefit for mother or child remains to be determined. Reviews

on this topic, including a Cochrane analysis, report on clinical studies that primarily focus on fetal blood gases and fetal growth in complicated (human) pregnancy.<sup>59,60</sup> Despite some evidence supporting that maternal oxygen therapy can improve fetal oxygen levels and fetal aortic blood flow in severe early onset fetal growth restriction,<sup>61</sup>

to date, all studies have concluded that the value of maternal hyperoxygenation for the treatment of hypoxic fetal growth restriction remains to be established.<sup>59–61</sup> In fact, some studies have highlighted potential adverse effects of maternal oxygen therapy by increasing levels of oxygen free radicals in the maternal and fetal circulation.<sup>62</sup> Higher levels of oxygen free radicals will sequester nitric oxide and offset any potential benefit of maternal hyperoxygenation on fetal oxygen levels by increasing vascular resistance.<sup>33–37</sup> Accordingly, it has been reported that maternal oxygen therapy can impair the increase in maternal cardiac output and diminish the fall in maternal peripheral vascular resistance, which are part of the normal maternal adaptive responses to pregnancy.<sup>62</sup> Certainly, there have been no human clinical studies testing maternal oxygen therapy intervention in hypoxic pregnancy to protect against an increased risk of cardiovascular disease in the adult offspring.

Similarly, there has been interest in the potential beneficial effects of maternal exercise during pregnancy on the physiology of the mother and offspring for close to 2 decades.<sup>63</sup> Prenatal exercise lowers pregnancy complications, including gestational diabetes, gestational hypertension, and maternal depression.<sup>64</sup> A systematic review and meta-analysis on the subject concluded that prenatal exercise is safe and beneficial for the fetus, as it reduced the odds of macrosomia and was not associated with adverse neonatal or childhood outcomes.<sup>65</sup> A second systematic review and meta-analysis on the effects of vigorous exercise in the third trimester of pregnancy reported that pregnant women who engaged in vigorous physical activity had a small but significant increase in the length of gestation and a small but significant decrease in the risk of giving birth preterm.<sup>66</sup> However, whether maternal prenatal exercise protects fetal growth in hypoxic pregnancy or has any benefit against cardiovascular disease in adulthood programmed developmentally by prenatal hypoxia has again not been investigated.

Recognized postnatal interventions in early life that may protect the cardiovascular health of the child born from a pregnancy complicated by fetal growth restriction include the promotion of breastfeeding and intervention with diets rich in healthy fats.<sup>51,67,68</sup> Children born from fetal growth-restricted pregnancies who are breastfed for at least 6 months have lower weight gain during childhood and improved cardiovascular remodeling.<sup>51,67</sup> Consumption of diets rich in omega-3 fatty acids also conferred cardiovascular benefits, such as lower arterial blood pressure and protection against aortic wall thickening, in children who were born small for gestational age, but not to those born with normal birth weight.<sup>51,68</sup>

### **Insight From Rodent Models**

Investigations in rodent species, including work using rats, mice, and guinea pigs, also support a link between pregnancy complicated by chronic hypoxia and an increased

risk of cardiovascular dysfunction in the offspring. Several groups have reported that hypoxic pregnancy in rats programs endothelial dysfunction, hypertension, cardiac wall remodeling, and cardiac sympathetic dominance in adult offspring.<sup>12,69–71</sup> There is strong evidence to support that the peripheral endothelial dysfunction in the adult offspring of hypoxic pregnancy is attributable to impaired nitric oxide bioavailability and signaling.<sup>12,69–71</sup> It has been suggested that the programmed cardiac phenotype of hypertrophy and cardiac sympathetic dominance may represent an attempt to maintain cardiac output in the face of increased afterload.<sup>70,71</sup> However, there is evidence that cardiac hypertrophy may be triggered independently of changes in fetal arterial blood pressure in some rodent models of adverse intrauterine conditions, as is the case in maternal obesity during pregnancy.<sup>72</sup> Cardiac function that is sympathetically dominant, although adaptive, cannot be sustained in the longer-term and this cardiac phenotype has been linked with eventual heart failure and cardiovascular collapse.<sup>70,71</sup> Consistent with this idea, investigations in rodents have also reported that hypoxic pregnancy increases susceptibility of the heart to ischemia-reperfusion injury at adulthood.<sup>73</sup>

Although several molecular pathways could link developmental hypoxia with programmed cardiovascular dysfunction in the adult offspring, including excess glucocorticoid exposure<sup>8,31,32</sup> and activation of inflammatory cascades,<sup>74,75</sup> the weight of the evidence derived from many independent studies in rodents supports oxidative stress having a major role.<sup>70,71,76–78</sup> Chronic hypoxia increases markers of oxidative stress in the placenta and fetal organs, including the heart and vasculature,<sup>12,70,71,76–78</sup> and maternal treatment in hypoxic pregnancy with antioxidants, such as vitamin C,<sup>70,71,79</sup> allopurinol,<sup>80</sup> or resveratrol,<sup>12</sup> all protect against programmed cardiovascular dysfunction in adult offspring. While such interventional studies provide a robust proof-of-principle supporting that maternal treatment with antioxidants in pregnancy complicated by chronic fetal hypoxia can be protective, translation of these discoveries to the human clinical situation is riddled with complications and questions that require further clarification. First, several of these experimental studies, including ours, have induced a reduction in oxygenation by placing the pregnant rodent dam in a hypoxic chamber.<sup>12,70,71,76–80</sup> This experimental approach is one of the few that permits exposure to chronic hypoxia of the embryo or fetus without physical obstruction of the uterine and/or umbilical circulation. While such an experimental design is important to best isolate the effects of developmental hypoxia in programming without significant perturbation in other nutrient transfer across the placenta, exposure of the pregnant dam to hypoxia leads to oxygen deficits in the maternal, placental as well as the fetal compartments. Therefore, the differential effects of hypoxia on the mother, placenta, or fetus and their partial contribution to programming cardiovascular dysfunction



in the adult offspring remains uncertain. Second, in contrast with humans, mice and rats are born highly immature, where many maturational processes carry on into the postnatal period.<sup>81</sup> Therefore, antioxidant treatment in these species during pregnancy may not equate to a similar timeline in human development. Third, rats and mice are polytocous species, giving birth to litters where the maternal metabolic adaptations to pregnancy are very different. Fourth, although studies in rodent hypoxic pregnancy with maternal antioxidant treatment with vitamin C proved to be protective, only very high doses incompatible with human clinical translation were effective.<sup>70,71,79</sup> This is problematic, as randomized placebo-controlled human clinical trials have reported that concomitant supplementation with vitamins C and E does not prevent preeclampsia in women at risk but does increase the rate of babies born with a low birth weight.<sup>82</sup> Therefore, in this field of science, there is an important need to isolate the partial effects of hypoxic pregnancy on the maternal, placental, and fetal compartments, as well as to design interventional studies using candidate antioxidants of improved clinical translation in animal models of comparable cardiovascular developmental milestones to humans.

### Insight From Bird Studies

Avian species offer several interesting characteristics as an animal model for developmental programming studies.<sup>83</sup> Since the embryo develops in isolation, studies in birds are ideal for disentangling the direct effects of adverse conditions on embryonic or fetal cardiovascular development from additional influences on the maternal or placental physiology. Additional advantages in chickens include their short incubation period, meaning that studies can be conducted more quickly; all available nutrition is fixed within the egg from the start of incubation; and there is no need for consideration of within litter variation or cross-fostering studies, as there are no effects of developmental conditions on lactation. Therefore, the model reduces the number of animals needed, abiding strongly to the 3R principle (replace, reduce, refine), enshrined by the Home Office EU Directive. In addition, the timing for many cardiovascular developmental milestones aligns more closely between chickens and humans compared with rodents.<sup>84</sup> Further added value of research in the chicken embryo model is that candidate therapeutic agents can be administered topically via a small hole in the eggshell air cell onto the richly vascularized chorioallantoic membrane. Therefore, the chicken embryo model not only helps to isolate the direct effects of adverse developmental conditions, but also those of potential treatments, on the cardiovascular structure and function of the bird either during the incubation period or at adulthood.<sup>83,84</sup>

Studies using chicken embryos have revealed that the hypobaric hypoxia of life at high altitude can also reduce fetal growth and that this effect can be mitigated by prolonged residence ancestry at high altitude, as in humans

(Figure 4). Incubation at La Paz of fertilized eggs laid by sea-level hens led to a significant reduction in embryo weight by the end of the incubation period.<sup>85</sup> Conversely, incubation of fertilized eggs laid by sea-level hens at high altitude with oxygen supplementation prevented the high altitude-induced reduction in embryo weight. Further, incubation at high altitude in La Paz of fertilized eggs laid by highland hens which had lived in La Paz for generations produced embryos that were larger compared with those of fertilized eggs laid by sea-level hens and incubated in La Paz. This finding in chickens confirms the protection against the effects of high-altitude hypoxia on fetal growth by prolonged highland residence ancestry first discovered in humans.<sup>46–48</sup> Last, incubation of fertilized eggs laid by high-altitude hens at sea level in Santa Cruz prevented the expected reduction in embryo weight. In fact, this group of embryos not only recovered their growth potential, but they grew comparatively heavier than embryos from eggs laid by hens at sea level, despite high-altitude eggs being substantially smaller than sea-level eggs (Figure 4).<sup>85</sup> Combined, these studies in birds and humans highlight the important direct role of oxygen in regulating fetal growth when considered in isolation. Furthermore, the studies emphasize that highland-adapted individuals can confer protection against the effects of hypoxia on fetal growth by passing a protective trait onto the offspring.<sup>85</sup> The mechanism of this intergenerational protection remains unidentified but is likely to be epigenetic in nature. Epigenetic mechanisms regulate gene activity in the absence of changes to the underlying DNA sequence, and include DNA methylation, histone modifications, chromatin-modifying proteins, and noncoding RNAs. These processes regulate how densely specific regions of DNA are compacted, thereby either preventing or enabling protein access, such as that of transcription factors, to DNA. More recently, it has been suggested that programmed effects can be observed beyond the first generation and that therefore epigenetic mechanisms could provide a vector of transmission of phenotype from parent to offspring across generations.<sup>86</sup>

Studies using the chicken embryo have also reported that incubation of fertilized eggs under hypoxic conditions recapitulates many components of the adverse cardiovascular phenotype described in rodent studies of chronic hypoxic pregnancy or in clinical studies of human pregnancy complicated by intrauterine growth restriction. Independent research groups have reported that chicken embryos incubated under hypoxic conditions show aortic wall thickening and nitric oxide-dependent endothelial dysfunction with enhanced sympathetic innervation in the peripheral vasculature, promoting a peripheral vasoconstrictor phenotype.<sup>87–91</sup> Despite sensitized cardiac  $\beta$ -adrenergic receptors,<sup>92</sup> hypoxic chicken embryos have reduced left ventricular ejection fraction and contractility, with diminished left ventricular developed pressure, indicative of uncompensated systolic dysfunction.<sup>84,90–95</sup> Adult chickens raised from eggs incubated at high altitude show

echocardiographic indices of pulmonary hypertension and right heart dysfunction.<sup>96</sup> Adult birds incubated under hypoxic isobaric conditions but raised in normoxia after hatching develop systemic hypertension with evidence of increased cardiac sympathetic reactivity and cardiac wall thickening and enhanced contractile responses to sympathetic stimulation while impaired, circulating nitric oxide bioavailability and nitric oxide-dependent endothelial dysfunction in the peripheral vasculature.<sup>88,93,97</sup> Itani et al<sup>84,89,90</sup> have also reported that hypoxic incubation promotes oxidative stress, reduces the expression and activity of endogenous antioxidant enzymes, and impairs nitric oxide levels in the cardiovascular system of the chicken embryo at term. Further, treatment of chicken embryos with antioxidants (eg, melatonin) or agents that increase nitric oxide bioavailability (eg, pravastatin and sildenafil) rescues cardiovascular dysfunction during hypoxic development.<sup>84,89,90,98</sup> Collectively, therefore, these studies in birds not only help to isolate the direct effects of chronic hypoxia on fetal cardiovascular development previously reported in mammals, including humans, but they also support that oxidative stress acting directly on the fetal cardiovascular system independent of the presence of a placenta is an important mechanistic driver of programming induced by developmental hypoxia, and that antioxidant therapy during the period of suboptimal development can be protective.

### **Insight From Ovine Studies**

To further translate these concepts into the human clinical situation, work described in small rodents and birds should ideally be replicated in a larger mammalian experimental model that boasts cardiovascular developmental milestones comparable to those in humans, such as those in sheep.<sup>99</sup> Pioneering studies of sheep undergoing pregnancy at high altitude, exposure to high ambient temperature, after carunclectomy, or during restriction of uteroplacental blood flow have reported striking similar effects on fetal growth and cardiovascular adaptations in fetal life.<sup>100–105</sup> It has been harder to attribute many of these effects to those induced by isolated chronic fetal hypoxia during pregnancy or to investigate the longer-term consequences of hypoxic pregnancy for the cardiovascular health of adult offspring. Progress in this field of science using sheep has been held back by several technical barriers. First, there has been an inability to induce significant long-term reductions in fetal oxygenation to values similar to those measured in human pregnancy complicated by fetal growth restriction, without incurring concomitant reduction in other nutritional substrates for fetal growth and development. Second, there has been an inability to record continuous *in vivo* cardiovascular function from the mother and the fetus as the hypoxic pregnancy is actually occurring. Third, few studies have maintained cohorts of lambs born from hypoxic pregnancies and raised them under normoxic conditions to study the cardiovascular

system of the offspring at adulthood. To address these gaps of knowledge, we have now created isobaric chambers able to maintain pregnant sheep for long periods of gestation under tightly controlled reductions in ambient oxygenation. This has been coupled with the design of a wireless data acquisition system which permits recording of several maternal and fetal blood pressure and blood flow signals via surgically-implanted catheters and flow probes in free-moving animals. Using this novel technology, we now know that hypoxic pregnancy in sheep of the type that mimics the reduced fetal oxygen levels in human complicated pregnancy recapitulates many of the effects on fetal growth, fetal cardiovascular function, and increased programmed cardiovascular risk in the offspring.<sup>38,40,106–108</sup> Pregnant ewes, in contrast with pregnant rodents, are a much more resilient to adverse hypoxic environments. Therefore, this level of chronic hypoxia in sheep occurs without any significant reduction in maternal food intake and in the absence of sustained elevations in maternal or fetal stress hormones.<sup>38,107</sup> The latter point is important as it highlights that hypoxic pregnancy can program cardiovascular dysfunction in the adult offspring independent of activation of the hypothalamic–pituitary–adrenal axis. Elegant studies of sheep undergoing pregnancy at high altitude by the group at Loma Linda are also consistent with the idea that hypoxic pregnancy can trigger a fetal origin of cardiovascular dysfunction, independent of excess fetal glucocorticoid exposure.<sup>100</sup>

Using the Cambridge model of chronic hypoxic pregnancy, Allison et al<sup>40</sup> reported that simultaneous measurement of fetal  $P_{aO_2}$  in the carotid and femoral arteries and carotid and femoral arterial blood flow within the hypoxic chambers permitted calculation of regional oxygen delivery in the chronically hypoxic sheep fetus. That study reported that the ratio of oxygen delivery to the fetal carotid circulation relative to the femoral arterial circulation increased significantly and progressively in the chronically hypoxic fetus. This confirms a maintained fetal brain-sparing hemodynamic response in the chronically hypoxic fetus. Shaw et al<sup>106</sup> reported that fetal heart rate variability in sheep is reduced by chronic hypoxia because of dysregulation of the sympathetic control of the fetal heart rate. That study suggested a potential mechanism by which a reduction in indices of fetal heart rate variability predicts infants at increased risk of neonatal morbidity and mortality in humans. In this ovine model of hypoxic pregnancy, oxidative stress remains an important culprit mechanism and there is successful intervention with antioxidants.<sup>107,108</sup> Brain et al<sup>107</sup> reported that maternal treatment with vitamin C in ovine hypoxic pregnancy protected against oxidative stress by enhancing fetal antioxidant capacity and improving transplacental oxygenation.<sup>107</sup> These effects of maternal treatment with vitamin C in hypoxic pregnancy protected against fetal growth restriction and normalized nitric oxide bioavailability, peripheral vascular function, and arterial blood

**Table. Consequences of Prenatal Hypoxia in Humans and Experimental Animals**

Animal	Hypoxia model	Fetal growth restriction	Pathology induced		Reference
			Perinatal period	Adulthood	
Rat	Hypoxic chamber	No	Aortic wall thickening		Herrera et al <sup>110</sup>
		No	Aortic wall thickening; decreased aortic vascular reactivity		Herrera et al <sup>110</sup>
		No	Increased oxidative stress; aortic wall thickening	Endothelial dysfunction; cardiac sympathetic dominance	Giussani et al <sup>70</sup>
		Yes		Increased cardiac ischemia–reperfusion injury	Xue and Zhang <sup>73</sup>
		Yes		Increased cardiac ischemia–reperfusion injury	Rueda-Clausen et al <sup>77,81</sup>
		Yes		Endothelial dysfunction	Morton et al <sup>69</sup> ; Giussani et al <sup>70,71</sup> ; Rueda-Clausen et al <sup>81</sup>
			Systemic hypertension; Increased sympathetic innervation	Rook et al <sup>111</sup>	
Mice	Hypoxic chamber	Yes		Endothelial dysfunction; Increased aortic collagen	Walton et al <sup>112</sup>
Guinea pig	Hypoxic chamber	Yes	Carotid endothelial dysfunction		Thompson et al <sup>113</sup>
	Uterine artery constriction	Yes		Endothelial dysfunction; arterial stiffness	Krause et al <sup>114</sup>
Chicken	Hypoxic incubator	Yes	Aortic wall thickening; sympathetic hyperinnervation		Ruijtenbeek et al <sup>87</sup> ; Rouwet et al <sup>94</sup>
		Yes	Cardiac oxidative stress; cardiac sympathetic dominance; endothelial dysfunction		Itani et al <sup>84, 89,90,98</sup>
		Yes	Systolic dysfunction; decreased contractile proteins		Jonker et al <sup>115</sup>
				Altered cardiac $\beta$ -adrenergic signaling	Lindgren and Altamiras <sup>92</sup>
		Yes	Mitochondria-derived oxidative stress; altered cardiac mitochondrial respiration; cardiac and endothelial dysfunction		Jonker et al <sup>95</sup> ; Botting et al <sup>108</sup>
				Dilated cardiomyopathy	Dilated cardiomyopathy
	Yes		Decreased nitric oxide bioavailability, systemic hypertension	Skeffington et al <sup>97</sup>	
	High altitude	Yes	Aortic wall thickening		Itani et al <sup>84</sup> ; Giussani et al <sup>85</sup> ; Salinas et al <sup>91</sup>
		Yes		Pulmonary hypertension	Salinas et al <sup>96</sup>
Sheep	Hypoxic chamber	Yes	Increased left ventricular diastolic pressure; decreased nitric oxide–dependent endothelial function		Brain et al <sup>98</sup>
			Persisting redistribution of substrate delivery to fetal brain		Allison et al <sup>40</sup>
			Altered autonomic control of fetal heart rate variability		Shaw et al <sup>106</sup>
		Yes	Cardiac and plasma indices of oxidative stress	Systemic hypertension; Increased constrictor reactivity; endothelial dysfunction	Brain et al <sup>107</sup>
		Yes	Cardiac and endothelial dysfunction	Systemic hypertension; endothelial dysfunction	Botting et al <sup>108</sup>
	Carunclectomy	Yes	Persisting redistribution of substrate delivery to fetal brain		Pouidel et al <sup>99</sup>
		Yes	Asymmetric fetal growth restriction; decreased [glucose]		Robinson et al <sup>104</sup>

(Continued)

**Table. Continued**

Animal	Hypoxia model	Fetal growth restriction	Pathology induced		Reference
			Perinatal period	Adulthood	
	Embolization	Yes	Hypertension, cardiac hypertrophy; increased [fetal noradrenaline]		Murotsuki et al <sup>103</sup>
	High ambient temperature	Yes	Increased coronary blood flow; decreased uterine blood flow; decreased [fetal insulin]		Barry et al <sup>102</sup>
	High altitude	Yes	Increased pulmonary wall thickness; pulmonary hypertension		Llanos et al <sup>101</sup>
Human	Fetal growth–restricted pregnancy	Yes	Increased cardiac remodeling; decreased cardiac function		Sehgal et al <sup>51</sup> ; Mayhew et al <sup>52</sup> ; Rizzo et al <sup>53</sup>
				Atheromatous aorta	Skilton et al <sup>54</sup> ; Zanardo et al <sup>55</sup>
		Yes		Aortic wall thickening	Leeson et al <sup>56,57</sup>
		Yes		Endothelial dysfunction; systemic hypertension	Zanardo et al <sup>55</sup> ; Bjarnegård et al <sup>58</sup>

Brackets indicate plasma concentration.

pressure in adult offspring. Botting et al<sup>108</sup> more recently reported that the beneficial effects of maternal vitamin C treatment during hypoxic pregnancy in sheep on fetal growth and programmed hypertension in adult offspring could be replicated and improved by maternal treatment with MitoQ in hypoxic pregnancy. These findings are important because MitoQ is a mitochondria-targeted antioxidant with enhanced human translational capacity. Specifically, compared with conventional antioxidants, MitoQ protects against cardiovascular dysfunction in adult offspring programmed by hypoxic pregnancy, without opposing the fetal vascular oxidant tone that contributes to the fetal redistribution of blood flow during hypoxic conditions (Figure 3).<sup>108</sup> This is extremely important, as it means that use of MitoQ in hypoxic pregnancy can protect the fetus against programmed systemic hypertension at adulthood, without weakening the fetal brain-sparing response to hypoxia.<sup>108</sup> In recent years, several magnetic resonance imaging approaches for the assessment of placental function and fetal cardiovascular physiology in sheep have also been developed.<sup>109</sup> These noninvasive techniques provide indispensable approaches to identifying placental and fetal cardiometabolic dysfunction in complicated pregnancy. Such technologies hold significant promise which will help in the translation of potential interventions, such as the use of mitochondria-targeted antioxidants, into the human clinical situation.

## Conclusions

In this review, data derived from clinical studies, as well as from a variety of animal models, have been compiled to support a strong link between chronic fetal hypoxia and increased susceptibility to cardiovascular dysfunction in the offspring (Table). Babies born from pregnancies complicated by chronic fetal hypoxia have an elevated risk of fetal growth restriction, endothelial dysfunction, sympathetic hyperinnervation, and alterations in the structure

and function of the heart and vessels that increases susceptibility to cardiovascular dysfunction in later life. Descriptive studies in this field have now been extended with highly mechanistic investigations, aiming to isolate underlying signaling pathways to identify potential therapy. Studies from many independent laboratories now propose oxidative stress in the placenta and developing fetal organs as a major mechanism linking suboptimal pregnancy with fetal growth restriction and an increased cardiovascular risk in the adult offspring (Table). Oxidative stress decreases nitric oxide bioavailability, impairing perfusion and thereby the delivery of oxygen and nutrients to the developing conceptus. Maternal treatment with antioxidants in pregnancy complicated by oxidative stress restores nitric oxide bioavailability protecting perfusion. Therefore, in contrast with other treatments, such as maternal hyperoxygenation in pregnancy complicated by fetal growth restriction, maternal antioxidant therapy restores the delivery of all essential nutrients necessary for appropriate fetal growth and development. Initial studies of maternal treatment with the antioxidant vitamin C in hypoxic pregnancy have provided the necessary proof-of-principle findings to support that maternal antioxidant therapy can protect against fetal growth restriction and programmed cardiovascular dysfunction in adult offspring. More recent studies have enhanced the human translational potential of these ideas, showing that maternal treatment with the mitochondria-targeted antioxidant MitoQ in hypoxic pregnancy can offer improved protection on fetal growth and programmed heart disease in the adult offspring. In contrast with conventional antioxidants, maternal treatment with MitoQ protects against developmental programming of heart disease in adult offspring while maintaining the fetal brain-sparing response to chronic hypoxia, thereby ensuring concomitant protection of the developing cardiovascular and central nervous systems in progeny. Future studies should focus on the applicability of mitochondria-targeted therapy

to the human clinical situation, evaluating its safety for mother and child.

## ARTICLE INFORMATION

### Affiliations

Department of Physiology, Development, and Neuroscience; The Barcroft Centre; Cambridge Cardiovascular British Heart Foundation Centre for Research Excellence; and Cambridge Strategic Research Initiative in Reproduction, University of Cambridge, UK.

### Acknowledgments

Dino Giussani is Professor of Developmental Cardiovascular Physiology and Medicine in the Department of Physiology, Development, and Neuroscience at the University of Cambridge; Professorial Fellow and Director of Studies in Medicine at Gonville and Caius College; a Lister Institute Fellow; and a Royal Society Wolfson Research Merit Award Holder.

### Sources of Funding

This work is supported by The British Heart Foundation (RG/17/8/32924) and the Medical Research Council UK (MR/V03362X/1). Both programs of research support Dr Giussani.

### Disclosures

None.

## REFERENCES

1. The British Heart Foundation. Facts and figures. Accessed July 2021. <https://www.bhf.org.uk/what-we-do/news-from-the-bhf/contact-the-press-office/facts-and-figures>
2. Gluckman PD, Hanson MA, Cooper C, Thornburg KL. Effect of in utero and early-life conditions on adult health and disease. *N Engl J Med*. 2008;359:61–73. doi: 10.1056/NEJMra0708473
3. Barker DJ, Osmond C, Golding J, Kuh D, Wadsworth ME. Growth in utero, blood pressure in childhood and adult life, and mortality from cardiovascular disease. *BMJ*. 1989;298:564–567. doi: 10.1136/bmj.298.6673.564
4. Bateson P, Barker D, Clutton-Brock T, Deb D, D'Udine B, Foley RA, Gluckman P, Godfrey K, Kirkwood T, Lahr MM, et al. Developmental plasticity and human health. *Nature*. 2004;430:419–421. doi: 10.1038/nature02725
5. Warner DA, Shine R. The adaptive significance of temperature-dependent sex determination in a reptile. *Nature*. 2008;451:566–568. doi: 10.1038/nature06519
6. Guénard F, Deshaies Y, Cianfione K, Kral JG, Marceau P, Vohl MC. Differential methylation in glucoregulatory genes of offspring born before vs. after maternal gastrointestinal bypass surgery. *Proc Natl Acad Sci U S A*. 2013;110:11439–11444. doi: 10.1073/pnas.1216959110
7. Fowden AL, Giussani DA, Forhead AJ. Intrauterine programming of physiological systems: causes and consequences. *Physiology (Bethesda)*. 2006;21:29–37. doi: 10.1152/physiol.00050.2005
8. Seckl JR. Glucocorticoids, developmental 'programming' and the risk of affective dysfunction. *Prog Brain Res*. 2008;167:17–34. doi: 10.1016/S0079-6123(07)67002-2
9. Almeida DL, Pavanello A, Saavedra LP, Pereira TS, de Castro-Prado MAA, de Freitas Mathias PC. Environmental monitoring and the developmental origins of health and disease. *J Dev Orig Health Dis*. 2019;10:608–615. doi: 10.1017/S2040174419000151
10. Vassoler FM, Wimmer ME. Consequences of parental opioid exposure on neurophysiology, behavior, and health in the next generations. *Cold Spring Harb Perspect Med*. 2020; 29: a040436. doi: 10.1101/cshperspect.a040436
11. Giussani DA. The fetal brain sparing response to hypoxia: physiological mechanisms. *J Physiol*. 2016;594:1215–1230. doi: 10.1113/JP271099
12. Giussani DA, Davidge ST. Developmental programming of cardiovascular disease by prenatal hypoxia. *J Dev Orig Health Dis*. 2013;4:328–337. doi: 10.1017/S204017441300010X
13. Fowden AL, Camm EJ, Sferuzzi-Perri AN. Effects of maternal obesity on placental phenotype. *Curr Vasc Pharmacol*. 2021;19:113–131. doi: 10.2174/1570161118666200513115316
14. Rudolph AM. The fetal circulation and its response to stress. *J Dev Physiol*. 1984;6:11–19.
15. Parer JT, Ikeda T, King TL. The 2008 National Institute of Child Health and Human Development report on fetal heart rate monitoring. *Obstet Gynecol*. 2009;114:136–138. doi: 10.1097/AOG.0b013e3181ab475f
16. Giussani DA, Spencer JA, Moore PJ, Bennet L, Hanson MA. Afferent and efferent components of the cardiovascular reflex responses to acute hypoxia in term fetal sheep. *J Physiol*. 1993;461:431–449. doi: 10.1113/jphysiol.1993.sp019521
17. King Hubbert M. Darcy's law of flow and the field equations of the flow of underground fluids. *Hydrological Sciences Journal*. 1957; 2: 23–59.
18. Pearce WJ. Mechanisms of hypoxic cerebral vasodilatation. *Pharmacol Ther*. 1995;65:75–91. doi: 10.1016/0163-7258(94)00058-b
19. Poiseuille JLM. Recherches experimentales sur le mouvement des liquides dans les tubes de tres petits diametres: Influence de la pression sur la quantite de liquide qui traverse les tubes de t\ns petits diametres. *C. R. Acad. Sci*. 1840; 11: 961–67.
20. Wladimiroff JW, vd Wijngaard JA, Degani S, Noordam MJ, van Eyck J, Tonge HM. Cerebral and umbilical arterial blood flow velocity waveforms in normal and growth-retarded pregnancies. *Obstet Gynecol*. 1987;69:705–709.
21. Gardner DS, Giussani DA, Fowden AL. Hindlimb glucose and lactate metabolism during umbilical cord compression and acute hypoxemia in the late-gestation ovine fetus. *Am J Physiol Regul Integr Comp Physiol*. 2003;284:R954–R964. doi: 10.1152/ajpregu.00438.2002
22. Thakor AS, Giussani DA. Effects of acute acidemia on the fetal cardiovascular defense to acute hypoxemia. *Am J Physiol Regul Integr Comp Physiol*. 2009;296:R90–R99. doi: 10.1152/ajpregu.90689.2008
23. Gardner DS, Fletcher AJ, Bloomfield MR, Fowden AL, Giussani DA. Effects of prevailing hypoxaemia, acidaemia or hypoglycaemia upon the cardiovascular, endocrine and metabolic responses to acute hypoxaemia in the ovine fetus. *J Physiol*. 2002;540:351–366. doi: 10.1113/jphysiol.2001.013434
24. Fletcher AJ, Edwards CM, Gardner DS, Fowden AL, Giussani DA. Neuropeptide Y in the sheep fetus: effects of acute hypoxemia and dexamethasone during late gestation. *Endocrinology*. 2000;141:3976–3982. doi: 10.1210/endo.141.11.7770
25. Sanhueza EM, Johansen-Bibby AA, Fletcher AJ, Riquelme RA, Daniels AJ, Serón-Ferré M, Gaete CR, Carrasco JE, Llanos AJ, Giussani DA. The role of neuropeptide Y in the ovine fetal cardiovascular response to reduced oxygenation. *J Physiol*. 2003;546(Pt 3):891–901. doi: 10.1113/jphysiol.2002.034488
26. Giussani DA, McGarrigle HH, Spencer JA, Moore PJ, Bennet L, Hanson MA. Effect of carotid denervation on plasma vasopressin levels during acute hypoxia in the late-gestation sheep fetus. *J Physiol*. 1994;477(Pt 1):81–87. doi: 10.1113/jphysiol.1994.sp020173
27. Fletcher AJ, Gardner DS, Edwards CM, Fowden AL, Giussani DA. Development of the ovine fetal cardiovascular defense to hypoxemia towards full term. *Am J Physiol Heart Circ Physiol*. 2006;291:H3023–H3034. doi: 10.1152/ajpheart.00504.2006
28. Fletcher AJ, Gardner DS, Edwards CM, Fowden AL, Giussani DA. Cardiovascular and endocrine responses to acute hypoxaemia during and following dexamethasone infusion in the ovine fetus. *J Physiol*. 2003;549(Pt 1):271–287. doi: 10.1113/jphysiol.2002.036418
29. Jellyman JK, Gardner DS, Edwards CM, Fowden AL, Giussani DA. Fetal cardiovascular, metabolic and endocrine responses to acute hypoxaemia during and following maternal treatment with dexamethasone in sheep. *J Physiol*. 2005;567:673–688. doi: 10.1113/jphysiol.2005.089805
30. Jellyman JK, Gardner DS, McGarrigle HH, Fowden AL, Giussani DA. Antenatal glucocorticoid therapy increases glucose delivery to cerebral circulations during acute hypoxemia in fetal sheep during late gestation. *Am J Obstet Gynecol*. 2009;201:82.e1–82.e8. doi: 10.1016/j.ajog.2009.01.012
31. Garrud TAC, Giussani DA. Combined antioxidant and glucocorticoid therapy for safer treatment of preterm birth. *Trends Endocrinol Metab*. 2019;30:258–269. doi: 10.1016/j.tem.2019.02.003
32. Jellyman JK, Fletcher AJW, Fowden AL, Giussani DA. Glucocorticoid maturation of fetal cardiovascular function. *Trends Mol Med*. 2020;26:170–184. doi: 10.1016/j.molmed.2019.09.005
33. Morrison S, Gardner DS, Fletcher AJ, Bloomfield MR, Giussani DA. Enhanced nitric oxide activity offsets peripheral vasoconstriction during acute hypoxaemia via chemoreflex and adrenomedullary actions in the sheep fetus. *J Physiol*. 2003;547(Pt 1):283–291. doi: 10.1113/jphysiol.2002.032615
34. Thakor AS, Richter HG, Kane AD, Dunster C, Kelly FJ, Poston L, Giussani DA. Redox modulation of the fetal cardiovascular defence to hypoxaemia. *J Physiol*. 2010;588(Pt 21):4235–4247. doi: 10.1113/jphysiol.2010.196402
35. Kane AD, Herrera EA, Hansell JA, Giussani DA. Statin treatment depresses the fetal defence to acute hypoxia via increasing nitric oxide bioavailability. *J Physiol*. 2012;590:323–334. doi: 10.1113/jphysiol.2011.217968

36. Kane AD, Hansell JA, Herrera EA, Allison BJ, Niu Y, Brain KL, Kaandorp JJ, Derks JB, Giussani DA. Xanthine oxidase and the fetal cardiovascular defence to hypoxia in late gestation ovine pregnancy. *J Physiol*. 2014;592:475–489. doi: 10.1113/jphysiol.2013.264275
37. Thakor AS, Allison BJ, Niu Y, Botting KJ, Serón-Ferré M, Herrera EA, Giussani DA. Melatonin modulates the fetal cardiovascular defense response to acute hypoxia. *J Pineal Res*. 2015;59:80–90. doi: 10.1111/jpi.12242
38. Brain KL, Allison BJ, Niu Y, Cross CM, Itani N, Kane AD, Herrera EA, Giussani DA. Induction of controlled hypoxic pregnancy in large mammalian species. *Physiol Rep*. 2015;3:e12614. doi: 10.14814/phy2.12614
39. Poudel R, McMillen IC, Dunn SL, Zhang S, Morrison JL. Impact of chronic hypoxemia on blood flow to the brain, heart, and adrenal gland in the late-gestation IUGR sheep fetus. *Am J Physiol Regul Integr Comp Physiol*. 2015;308:R151–R162. doi: 10.1152/ajpregu.00036.2014
40. Allison BJ, Brain KL, Niu Y, Kane AD, Herrera EA, Thakor AS, Botting KJ, Cross CM, Itani N, Skeffington KL, Beck C, Giussani DA. Fetal in vivo continuous cardiovascular function during chronic hypoxia. *J Physiol*. 2016;594:1247–1264. doi: 10.1113/JP271091
41. Hernandez-Andrade E, Figueroa-Diesel H, Jansson T, Rangel-Nava H, Gratacos E. Changes in regional fetal cerebral blood flow perfusion in relation to hemodynamic deterioration in severely growth-restricted fetuses. *Ultrasound Obstet Gynecol*. 2008;32:71–76. doi: 10.1002/uog.5377
42. Jackson BT, Piasecki GJ, Cohn HE, Cohen WR. Control of fetal insulin secretion. *Am J Physiol Regul Integr Comp Physiol*. 2000;279:R2179–R2188. doi: 10.1152/ajpregu.2000.279.6.R2179
43. Zamudio S, Torricos T, Fik E, Oyala M, Echalar L, Pullockaran J, Tutino E, Martin B, Belliappa S, Balanza E, et al. Hypoglycemia and the origin of hypoxia-induced reduction in human fetal growth. *PLoS One*. 2010;5:e8551. doi: 10.1371/journal.pone.0008551
44. Cetin I, Taricco E, Mandò C, Radaelli T, Boito S, Nuzzo AM, Giussani DA. Fetal oxygen and glucose consumption in human pregnancy complicated by fetal growth restriction. *Hypertension*. 2020;75:748–754. doi: 10.1161/HYPERTENSIONAHA.119.13727
45. Nuzzo AM, Camm EJ, Sterrucci-Perri AN, Ashmore TJ, Yung HW, Cindrova-Davies T, Spiroski AM, Sutherland MR, Logan A, et al. Placental adaptation to early-onset hypoxic pregnancy and mitochondria-targeted antioxidant therapy in a rodent model. *Am J Pathol*. 2018;188:2704–2716. doi: 10.1016/j.ajpath.2018.07.027
46. Giussani DA, Phillips PS, Anstee S, Barker DJ. Effects of altitude versus economic status on birth weight and body shape at birth. *Pediatr Res*. 2001;49:490–494. doi: 10.1203/00006450-200104000-00009
47. Soria R, Julian CG, Vargas E, Moore LG, Giussani DA. Graduated effects of high-altitude hypoxia and highland ancestry on birth size. *Pediatr Res*. 2013;74:633–638. doi: 10.1038/pr.2013.150
48. Giussani DA. Hypoxia, fetal growth and early origins of disease: the Andean curse on the Conquistadors. *J Physiol*. 2007;582(Pt 2):472. doi: 10.1113/jphysiol.2007.137281
49. Rajendran P, Rengarajan T, Thangavel J, Nishigaki Y, Sakthisekaran D, Sethi G, Nishigaki I. The vascular endothelium and human diseases. *Int J Biol Sci*. 2013;9:1057–1069. doi: 10.7150/ijbs.7502
50. Veille JC, Hanson R, Sivakoff M, Hoen H, Ben-Ami M. Fetal cardiac size in normal, intrauterine growth retarded, and diabetic pregnancies. *Am J Perinatol*. 1993;10:275–279. doi: 10.1055/s-2007-994739
51. Sehgal A, Skilton MR, Crispi F. Human fetal growth restriction: a cardiovascular journey through to adolescence. *J Dev Orig Health Dis*. 2016;7:626–635. doi: 10.1017/S2040174416000337
52. Mayhew TM, Gregson C, Fagan DG. Ventricular myocardium in control and growth-retarded human fetuses: growth in different tissue compartments and variation with fetal weight, gestational age, and ventricle size. *Hum Pathol*. 1999;30:655–660. doi: 10.1016/s0046-8177(99)90090-4
53. Rizzo G, Capponi A, Rinaldo D, Arduini D, Romanini C. Ventricular ejection force in growth-retarded fetuses. *Ultrasound Obstet Gynecol*. 1995;5:247–255. doi: 10.1046/j.1469-0705.1995.05040247.x
54. Skilton MR, Evans N, Griffiths KA, Harmer JA, Celermajer DS. Aortic wall thickness in newborns with intrauterine growth restriction. *Lancet*. 2005;365:1484–1486. doi: 10.1016/S0140-6736(05)66419-7
55. Zanardo V, Visentin S, Trevisanuto D, Bertin M, Cavallin F, Cosmi E. Fetal aortic wall thickness: a marker of hypertension in IUGR children? *Hypertens Res*. 2013;36:440–443. doi: 10.1038/hr.2012.219
56. Leeson CP, Whincup PH, Cook DG, Donald AE, Papacosta O, Lucas A, Deanfield JE. Flow-mediated dilation in 9- to 11-year-old children: the influence of intrauterine and childhood factors. *Circulation*. 1997;96:2233–2238. doi: 10.1161/01.cir.96.7.2233
57. Leeson CP, Kattenhorn M, Morley R, Lucas A, Deanfield JE. Impact of low birth weight and cardiovascular risk factors on endothelial function in early adult life. *Circulation*. 2001;103:1264–1268. doi: 10.1161/01.cir.103.9.1264
58. Bjarnegård N, Morsing E, Cinthio M, Länne T, Brodzski J. Cardiovascular function in adulthood following intrauterine growth restriction with abnormal fetal blood flow. *Ultrasound Obstet Gynecol*. 2013;41:177–184. doi: 10.1002/uog.12314
59. Say L, Gülmezoglu AM, Hofmeyr GJ. Maternal oxygen administration for suspected impaired fetal growth. *Cochrane Database Syst Rev*. 2003;(1):CD000137. doi: 10.1002/14651858.CD000137
60. McHugh A, El-Khuffash A, Franklin O, Breathnach FM. Calling into question the future of hyperoxygenation in pregnancy. *Eur J Obstet Gynecol Reprod Biol*. 2021;258:93–97. doi: 10.1016/j.ejogrb.2020.12.054
61. Bilardo CM, Snijders RM, Campbell S, Nicolaides KH. Doppler study of the fetal circulation during long-term maternal hyperoxygenation for severe early onset intrauterine growth retardation. *Ultrasound Obstet Gynecol*. 1991;1:250–257. doi: 10.1046/j.1469-0705.1991.01040250.x
62. Chatmongkolchart S, Prathep S. Supplemental oxygen for caesarean section during regional anaesthesia. *Cochrane Database Syst Rev*. 2016;3:CD006161. doi: 10.1002/14651858.CD006161.pub3
63. Clapp JF III. The effects of maternal exercise on fetal oxygenation and fetal-placental growth. *Eur J Obstet Gynecol Reprod Biol*. 2003;110 Suppl 1:S80–S85. doi: 10.1016/s0301-2115(03)00176-3
64. Bhattacharjee J, Mohammad S, Adamo KB. Does exercise during pregnancy impact organs or structures of the maternal-fetal interface? *Tissue Cell*. 2021;72:101543. doi: 10.1016/j.tice.2021.101543
65. Davenport MH, Meah VL, Ruchat SM, Davies GA, Skow RJ, Barrowman N, Adamo KB, Poitras VJ, Gray CE, Jaramillo Garcia A, et al. Impact of prenatal exercise on neonatal and childhood outcomes: a systematic review and meta-analysis. *Br J Sports Med*. 2018;52:1386–1396. doi: 10.1136/bjsports-2018-099836
66. Beetham KS, Giles C, Noetel M, Clifton V, Jones JC, Naughton G. The effects of vigorous intensity exercise in the third trimester of pregnancy: a systematic review and meta-analysis. *BMC Pregnancy Childbirth*. 2019;19:281. doi: 10.1186/s12884-019-2441-1
67. Rodriguez-Lopez M, Osorio L, Acosta-Rojas R, Figueras J, Cruz-Lemini M, Figueras F, Bijns B, Gratacós E, Crispi F. Influence of breastfeeding and postnatal nutrition on cardiovascular remodeling induced by fetal growth restriction. *Pediatr Res*. 2016;79:100–106. doi: 10.1038/pr.2015.182
68. Skilton MR, Pahkala K, Viikari JS, Rönnemaa T, Simell O, Jula A, Niinikoski H, Celermajer DS, Raitakari OT. The association of dietary alpha-linolenic acid with blood pressure and subclinical atherosclerosis in people born small for gestational age: the Special Turku Coronary Risk Factor Intervention Project study. *J Pediatr*. 2015;166:1252–1257.e2. doi: 10.1016/j.jpeds.2015.01.020
69. Morton JS, Rueda-Clausen CF, Davidge ST. Mechanisms of endothelium-dependent vasodilation in male and female, young and aged offspring born growth restricted. *Am J Physiol Regul Integr Comp Physiol*. 2010;298:R930–R938. doi: 10.1152/ajpregu.00641.2009
70. Giussani DA, Camm EJ, Niu Y, Richter HG, Blanco CE, Gottschalk R, Blake EZ, Horder KA, Thakor AS, Hansell JA, et al. Developmental programming of cardiovascular dysfunction by prenatal hypoxia and oxidative stress. *PLoS One*. 2012;7:e31017. doi: 10.1371/journal.pone.0031017
71. Giussani DA, Niu Y, Herrera EA, Richter HG, Camm EJ, Thakor AS, Kane AD, Hansell JA, Brain KL, Skeffington KL, et al. Heart disease link to fetal hypoxia and oxidative stress. *Adv Exp Med Biol*. 2014;814:77–87. doi: 10.1007/978-1-4939-1031-1\_7
72. Beeson JH, Blackmore HL, Carr SK, Dearden L, Duque-Guimarães DE, Kusinski LC, Pantaleão LC, Pinnock AG, Aiken CE, Giussani DA, et al. Maternal exercise intervention in obese pregnancy improves the cardiovascular health of the adult male offspring. *Mol Metab*. 2018;16:35–44. doi: 10.1016/j.molmet.2018.06.009
73. Xue Q, Zhang L. Prenatal hypoxia causes a sex-dependent increase in heart susceptibility to ischemia and reperfusion injury in adult male offspring: role of protein kinase C epsilon. *J Pharmacol Exp Ther*. 2009;330:624–632. doi: 10.1124/jpet.109.153239
74. Thompson JA, Webb RC. Potential role of Toll-like receptors in programming of vascular dysfunction. *Clin Sci (Lond)*. 2013;125:19–25. doi: 10.1042/CS20120673
75. Frasch MG, Giussani DA. Impact of chronic fetal hypoxia and inflammation on cardiac pacemaker cell development. *Cells*. 2020;9:E733. doi: 10.3390/cells9030733
76. Patterson AJ, Xiao D, Xiong F, Dixon B, Zhang L. Hypoxia-derived oxidative stress mediates epigenetic repression of PKCε gene in foetal rat hearts. *Cardiovasc Res*. 2012;93:302–310. doi: 10.1093/cvr/cvr322

77. Rueda-Clausen CF, Morton JS, Oudit GY, Kassiri Z, Jiang Y, Davidge ST. Effects of hypoxia-induced intrauterine growth restriction on cardiac siderosis and oxidative stress. *J Dev Orig Health Dis.* 2012;3:350–357. doi: 10.1017/S2040174412000219
78. Thompson LP, Al-Hasan Y. Impact of oxidative stress in fetal programming. *J Pregnancy.* 2012;2012:582748. doi: 10.1155/2012/582748
79. Kane AD, Herrera EA, Camm EJ, Giussani DA. Vitamin C prevents intrauterine programming of in vivo cardiovascular dysfunction in the rat. *Circ J.* 2013;77:2604–2611. doi: 10.1253/circj.cj-13-0311
80. Niu Y, Kane AD, Lusby CM, Allison BJ, Chua YY, Kaandorp JJ, Nevin-Dolan R, Ashmore TJ, Blackmore HL, Derks JB, et al. Maternal allopurinol prevents cardiac dysfunction in adult male offspring programmed by chronic hypoxia during pregnancy. *Hypertension.* 2018;72:971–978. doi: 10.1161/HYPERTENSIONAHA.118.11363
81. Rueda-Clausen CF, Morton JS, Davidge ST. The early origins of cardiovascular health and disease: who, when, and how. *Semin Reprod Med.* 2011;29:197–210. doi: 10.1055/s-0031-1275520
82. Rumbold A, Duley L, Crowther CA, Haslam RR. Antioxidants for preventing pre-eclampsia. *Cochrane Database Syst Rev.* 2008(1):CD004227. doi: 10.1002/14651858.CD004227.pub3
83. Skeffington KL, Beck C, Itani N, Giussani DA. Isolating the direct effects of adverse developmental conditions on in vivo cardiovascular function at adulthood: the avian model. *J Dev Orig Health Dis.* 2018;9:460–466. doi: 10.1017/S2040174418000247
84. Itani N, Salinas CE, Villena M, Skeffington KL, Beck C, Villamor E, Blanco CE, Giussani DA. The highs and lows of programmed cardiovascular disease by developmental hypoxia: studies in the chicken embryo. *J Physiol.* 2018;596:2991–3006. doi: 10.1113/JP274111
85. Giussani DA, Salinas CE, Villena M, Blanco CE. The role of oxygen in prenatal growth: studies in the chick embryo. *J Physiol.* 2007;585:911–917. doi: 10.1113/jphysiol.2007.141572
86. Fernandez-Twinn DS, Constância M, Ozanne SE. Intergenerational epigenetic inheritance in models of developmental programming of adult disease. *Semin Cell Dev Biol.* 2015;43:85–95. doi: 10.1016/j.semcdb.2015.06.006
87. Ruijtenbeek K, le Noble FA, Janssen GM, Kessels CG, Fazzi GE, Blanco CE, De Mey JG. Chronic hypoxia stimulates periarterial sympathetic nerve development in chicken embryo. *Circulation.* 2000;102:2892–2897. doi: 10.1161/01.cir.102.23.2892
88. Ruijtenbeek K, Kessels CG, Janssen BJ, Bitsch NJ, Fazzi GE, Janssen GM, De Mey J, Blanco CE. Chronic moderate hypoxia during in ovo development alters arterial reactivity in chickens. *Pflugers Arch.* 2003;447:158–167. doi: 10.1007/s00424-003-1170-4
89. Itani N, Skeffington KL, Beck C, Niu Y, Giussani DA. Melatonin rescues cardiovascular dysfunction during hypoxic development in the chick embryo. *J Pineal Res.* 2016;60:16–26. doi: 10.1111/jpi.12283
90. Itani N, Skeffington KL, Beck C, Giussani DA. Sildenafil therapy for fetal cardiovascular dysfunction during hypoxic development: studies in the chick embryo. *J Physiol.* 2017;595:1563–1573. doi: 10.1113/JP273393
91. Salinas CE, Blanco CE, Villena M, Camm EJ, Tuckett JD, Weerakkody RA, Kane AD, Shelley AM, Wooding FB, Quy M, et al. Cardiac and vascular disease prior to hatching in chick embryos incubated at high altitude. *J Dev Orig Health Dis.* 2010;1:60–66. doi: 10.1017/S2040174409990043
92. Lindgren I, Altimiras J. Prenatal hypoxia programs changes in  $\beta$ -adrenergic signaling and postnatal cardiac contractile dysfunction. *Am J Physiol Regul Integr Comp Physiol.* 2013;305:R1093–R1101. doi: 10.1152/ajpregu.00320.2013
93. Tintu A, Rouwet E, Verlohren S, Brinkmann J, Ahmad S, Crispi F, van Bilsen M, Carmeliet P, Staff AC, Tjwa M, et al. Hypoxia induces dilated cardiomyopathy in the chick embryo: mechanism, intervention, and long-term consequences. *PLoS One.* 2009;4:e5155. doi: 10.1371/journal.pone.0005155
94. Rouwet EV, Tintu AN, Schellings MW, van Bilsen M, Lutgens E, Hofstra L, Slaaf DW, Ramsay G, Le Noble FA. Hypoxia induces aortic hypertrophic growth, left ventricular dysfunction, and sympathetic hyperinnervation of peripheral arteries in the chick embryo. *Circulation.* 2002;105:2791–2796. doi: 10.1161/01.cir.0000017497.47084.06
95. Jonker SS, Giraud GD, Espinoza HM, Davis EN, Crossley DA II. Effects of chronic hypoxia on cardiac function measured by pressure-volume catheter in fetal chickens. *Am J Physiol Regul Integr Comp Physiol.* 2015;308:R680–R689. doi: 10.1152/ajpregu.00484.2014
96. Salinas CE, Blanco CE, Villena M, Giussani DA. High-altitude hypoxia and echocardiographic indices of pulmonary hypertension in male and female chickens at adulthood. *Circ J.* 2014;78:1459–1464. doi: 10.1253/circj.cj-13-1329
97. Skeffington KL, Beck C, Itani N, Niu Y, Shaw CJ, Giussani DA. Hypertension programmed in adult hens by isolated effects of developmental hypoxia in ovo. *Hypertension.* 2020;76:533–544. doi: 10.1161/HYPERTENSIONAHA.120.15045
98. Itani N, Skeffington KL, Beck C, Niu Y, Katzilieris-Petras G, Smith N, Giussani DA. Protective effects of pravastatin on the embryonic cardiovascular system during hypoxic development. *FASEB J.* 2020;34:16504–16515. doi: 10.1096/fj.202001743R
99. Morrison JL, Berry MJ, Botting KJ, Darby JRT, Frasch MG, Gattford KL, Giussani DA, Gray CL, Harding R, Herrera EA, et al. Improving pregnancy outcomes in humans through studies in sheep. *Am J Physiol Regul Integr Comp Physiol.* 2018;315:R1123–R1153. doi: 10.1152/ajpregu.00391.2017
100. Ducsay CA, Goyal R, Pearce WJ, Wilson S, Hu XQ, Zhang L. Gestational hypoxia and developmental plasticity. *Physiol Rev.* 2018;98:1241–1334. doi: 10.1152/physrev.00043.2017
101. Llanos AJ, Ebensperger G, Herrera EA, Reyes RV, Cabello G, Díaz M, Giussani DA, Parer JT. The heme oxygenase-carbon monoxide system in the regulation of cardiorespiratory function at high altitude. *Respir Physiol Neurobiol.* 2012;184:186–191. doi: 10.1016/j.resp.2012.05.003
102. Barry JS, Rozance PJ, Anthony RV. An animal model of placental insufficiency-induced intrauterine growth restriction. *Semin Perinatol.* 2008;32:225–230. doi: 10.1053/j.semperi.2007.11.004
103. Murotsuki J, Challis JR, Han VK, Fraher LJ, Gagnon R. Chronic fetal placental embolization and hypoxemia cause hypertension and myocardial hypertrophy in fetal sheep. *Am J Physiol.* 1997;272:R201–R207. doi: 10.1152/ajpregu.1997.272.1.R201
104. Robinson JS, Kingston EJ, Jones CT, Thorburn GD. Studies on experimental growth retardation in sheep. The effect of removal of an endometrial caruncles on fetal size and metabolism. *J Dev Physiol.* 1979;1:379–398.
105. Supramaniam VG, Jenkin G, Loose J, Wallace EM, Miller SL. Chronic fetal hypoxia increases activin A concentrations in the late-pregnant sheep. *BJOG.* 2006;113:102–109. doi: 10.1111/j.1471-0528.2005.00791.x
106. Shaw CJ, Allison BJ, Itani N, Botting KJ, Niu Y, Lees CC, Giussani DA. Altered autonomic control of heart rate variability in the chronically hypoxic fetus. *J Physiol.* 2018;596:6105–6119. doi: 10.1113/JP275659
107. Brain KL, Allison BJ, Niu Y, Cross CM, Itani N, Kane AD, Herrera EA, Skeffington KL, Botting KJ, Giussani DA. Intervention against hypertension in the next generation programmed by developmental hypoxia. *PLoS Biol.* 2019;17:e2006552. doi: 10.1371/journal.pbio.2006552
108. Botting KJ, Skeffington KL, Niu Y, Allison BJ, Brain KL, Itani N, Beck C, Logan A, Murray AJ, Murphy MP, et al. Translatable mitochondria-targeted protection against programmed cardiovascular dysfunction. *Sci Adv.* 2020;6:eabb1929. doi: 10.1126/sciadv.abb1929
109. Saini BS, Darby JRT, Marini D, Portnoy S, Lock MC, Yin Soo J, Holman SL, Perumal SR, Wald RM, Windrim R, et al. An MRI approach to assess placental function in healthy humans and sheep. *J Physiol.* 2021;599:2573–2602. doi: 10.1113/JP281002
110. Herrera EA, Camm EJ, Cross CM, Mullender JL, Wooding FB, Giussani DA. Morphological and functional alterations in the aorta of the chronically hypoxic fetal rat. *J Vasc Res.* 2012;49:50–58. doi: 10.1159/000330666
111. Rook W, Johnson CD, Coney AM, Marshall JM. Prenatal hypoxia leads to increased muscle sympathetic nerve activity, sympathetic hyperinnervation, premature blunting of neuropeptide Y signaling, and hypertension in adult life. *Hypertension.* 2014;64:1321–1327. doi: 10.1161/HYPERTENSIONAHA.114.04374
112. Walton SL, Singh RR, Tan T, Paravicini TM, Moritz KM. Late gestational hypoxia and a postnatal high salt diet programs endothelial dysfunction and arterial stiffness in adult mouse offspring. *J Physiol.* 2016;594:1451–1463. doi: 10.1113/JP271067
113. Thompson LP, Weiner CP. Effects of acute and chronic hypoxia on nitric oxide-mediated relaxation of fetal guinea pig arteries. *Am J Obstet Gynecol.* 1999;181:105–111. doi: 10.1016/s0002-9378(99)70444-8
114. Krause BJ, Peñalosa E, Candia A, Cañas D, Hernández C, Arenas GA, Peralta-Scholz MJ, Valenzuela R, García-Herrera C, Herrera EA. Adult vascular dysfunction in foetal growth-restricted guinea-pigs is associated with a neonate-adult switching in Nos3 DNA methylation. *Acta Physiol (Oxf).* 2019;227:e13328. doi: 10.1111/apha.13328
115. Jonker SS, Giraud GD, Espinoza HM, Davis EN, Crossley DA II. Effects of chronic hypoxia on cardiac function measured by pressure-volume catheter in fetal chickens. *Am J Physiol Regul Integr Comp Physiol.* 2015;308:R680–R689. doi: 10.1152/ajpregu.00484.2014